

**luxe.**  
interiors + design

ARIZONA EDITION

# luxe.

interiors + design®



**VALLONE**



RIGHT AT HOME

WRITTEN BY **MARISA SPYKER**  
PHOTOGRAPHY BY **DINO TONN**

THE FIRST TIME THE OWNERS OF THIS 13,000-SQUARE-FOOT SCOTTSDALE RESIDENCE SET FOOT IN THEIR NEW HOME, IT WAS JUST DAYS BEFORE THEY'D BE HOSTING A CROWD OF PEOPLE ON THE PROPERTY FOR THEIR DAUGHTER'S WEDDING. "We'd been planning the wedding for a year, and had no idea we would be cutting it so close," says the wife. The owners, however, didn't worry. Left in the hands of a talented design team, the home was equipped with everything from a putting green and shuffleboard table to ample outdoor space. "They wanted the house to reflect a casual, comfortable lifestyle, but something that would be fit for entertaining," says interiors maven Donna Vallone, president and lead designer at Vallone Design, Inc., in Scottsdale.

RIGHT AT HOME

WRITTEN BY **MARISA SPYKER**  
PHOTOGRAPHY BY **DINO TONN**

THE FIRST TIME THE OWNERS OF THIS 13,000-SQUARE-FOOT SCOTTSDALE RESIDENCE SET FOOT IN THEIR NEW HOME, IT WAS JUST DAYS BEFORE THEY'D BE HOSTING A CROWD OF PEOPLE ON THE PROPERTY FOR THEIR DAUGHTER'S WEDDING. "We'd been planning the wedding for a year, and had no idea we would be cutting it so close," says the wife. The owners, however, didn't worry. Left in the hands of a talented design team, the home was equipped with everything from a putting green and shuffleboard table to ample outdoor space. "They wanted the house to reflect a casual, comfortable lifestyle, but something that would be fit for entertaining," says interiors maven Donna Vallone, president and lead designer at Vallone Design, Inc., in Scottsdale.

Discovered by the husband nearly two and a half years before, during the framing stages of construction, the home began as a spec project developed and built by Scott Pfeiffer, president of Scottsdale-based Sonora West Development, Inc. Pfeiffer recruited architect CP Drewett, principal of Drewett + Brenden Architecture in Phoenix, to design a Mediterranean, hacienda-style home with expansive outdoor living spaces and views of the city lights. "I liked the lot because of its proximity to nature," Pfeiffer says. The builder brought an element of the outdoors into the

INTERIOR DESIGN Donna Vallone and Shane Mehrer, Vallone Design, Inc.		
HOME BUILDER Scott Pfeiffer, Sonora West Development, Inc.		
ARCHITECTURE CP Drewett, Drewett + Brenden Architecture		
BEDROOMS 5	BATHROOMS 10	SQUARE FEET 13,000



CONTINUED FROM PAGE 187

structure by incorporating natural stone quarried directly from the site into the exterior façade, adding a look of authenticity to the home. "The stone works well in this area because it blends with the natural hillside," he says.

The owners, taken by the peaceful setting and indoor/outdoor presence of the residence in progress, immediately purchased the home, and sought out Vallone and project manager Shane Mehrer, also of Vallone Design, Inc., to revamp the interiors. "The original plan called for more bedrooms," says the husband. "But our preference was for fewer rooms

**CORNER POCKET**

A cozy nook in one of the luxurious guest suites features drapes made with Lee Jofa fabric, a desk by Palecek and chair from Hickory Chair.



CONTINUED FROM PAGE 187

structure by incorporating natural stone quarried directly from the site into the exterior façade, adding a look of authenticity to the home. "The stone works well in this area because it blends with the natural hillside," he says.

The owners, taken by the peaceful setting and indoor/outdoor presence of the residence in progress, immediately purchased the home, and sought out Vallone and project manager Shane Mehrer, also of Vallone Design, Inc., to revamp the interiors. "The original plan called for more bedrooms," says the husband. "But our preference was for fewer rooms

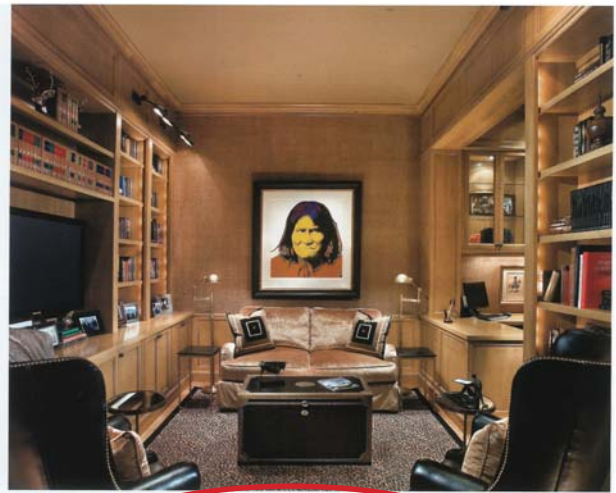
**CORNER POCKET**

A cozy nook in one of the luxurious guest suites features drapes made with Lee Jofa fabric, a desk by Palecek and chair from Hickory Chair.

**PLAY HOUSE**  
In the great room, the designers chose plush furnishings, stone accents and flowing draperies to create a comfortable environment for the owners and their guests. A Champoux shuffleboard stretches along the back of the room for a playful touch.



**COLOR SPLASH**  
The designers selected wallpaper for the colorful and subtle backdrop from the Lee Joplin fabric that softens pillows in the living room. Seating from Century Furniture, reclaimed oak flooring and wooden beams contrast and characterize.



CONTINUED FROM PAGE 188

and larger spaces so that each could be as comfortable as possible." Together, the team developed a plan to slightly reconfigure the interior spaces to accommodate the owners' request. "They wanted guest suites that were comparable to a five-star hotel," Mehner says.

Interior finishes were chosen to reflect the owners' need for comfort and livability. Floors of reclaimed white oak clad the main living areas, while Venetian plaster walls add simplicity. Marble was incorporated in the bathrooms to mimic the feeling of a luxurious hotel. "She wanted elements of femininity in the home, so she could have a retreat away from the master bedroom," Vallone says. As for the husband's masculine



**STYLE SELECTION**  
Redefine lighting in a unique way with this rustic pendant, finished in antique nickel and featuring an elegant, white glass shade. Country Industrial Pendant, \$694; circaighting.com

CONTINUED FROM PAGE 188

and larger spaces so that each could be as comfortable as possible." Together, the team developed a plan to slightly reconfigure the interior spaces to accommodate the owners' request. "They wanted guest suites that were comparable to a five-star hotel," Mehner says.

Interior finishes were chosen to reflect the owners' need for comfort and livability. Floors of reclaimed white oak clad the main living areas, while Venetian plaster walls add simplicity. Marble was incorporated in the bathrooms to mimic the feeling of a luxurious hotel. "She wanted elements of femininity in the home, so she could have a retreat away from the master bedroom," Vallone says. As for the husband's masculine



**STYLE SELECTION**  
Redefine lighting in a unique way with this rustic pendant, finished in antique nickel and featuring an elegant, white glass shade. Country Industrial Pendant, \$694; circaighting.com



**PATTERN PLAY**  
An intricate painted ceiling by LuAnn Beardmore in Scottsdale creates an interesting focal point in the narrow butler's pantry. The serving cart is by Sarreid, and zinc countertops are by Grayleaf Studio.

CONTINUED FROM PAGE 191

counterpart, the designers created a separate wing, consisting of an office, master bath and club room—dubbed the “man cave” by Vallone—where the design direction took a more creative turn in the form of textured wall coverings, leather furniture and authentic millwork.

Throughout the home, color and texture were explored through fabric, furniture and accessories. The designers convinced the homeowners to opt for a more contemporary aesthetic, while still infusing personality through quirky antiques and personal touches. “While I love the visual,



**PATTERN PLAY**  
An intricate painted ceiling by LuAnn Beardmore in Scottsdale creates an interesting focal point in the narrow butler's pantry. The serving cart is by Sarreid, and zinc countertops are by Grayleaf Studio.

CONTINUED FROM PAGE 191

counterpart, the designers created a separate wing, consisting of an office, master bath and club room—dubbed the “man cave” by Vallone—where the design direction took a more creative turn in the form of textured wall coverings, leather furniture and authentic millwork.

Throughout the home, color and texture were explored through fabric, furniture and accessories. The designers convinced the homeowners to opt for a more contemporary aesthetic, while still infusing personality through quirky antiques and personal touches. “While I love the visual,



**PREMIUM WASH**  
Created to look and feel like a luxury hotel with a feminine vibe, the wife's personal bath features a Kohler tub set atop Calacatta marble flooring from Arizona Tile. Chandelier is from Arteriors Home.

CONTINUED FROM PAGE 192

I find that stark contemporary design is not always as warm and inviting of a setting as I want to live in," the wife says. Open to suggestions, the owners allowed the designers to perfect a juxtaposition of rustic wooden pieces, plush suede, velvet and leather seating, and patterned carpets and drapes. Pops of color were infused through accent pillows and the owners' collection of contemporary artwork. "We wanted to lighten the mood a bit and keep it fun," Mehrer says.

194 LUXE INTERIORS+DESIGN



**GUEST SPOT**  
In the sitting room of one guest suite, the designers chose a cream-colored plaid, adding touches of red and green with patterned Lee Jaffe armchairs, elegant chairs from Hickory Chair, and a contemporary chandelier from the Studio.

**PREMIUM WASH**

Created to look and feel like a luxury hotel with a feminine vibe, the wife's personal bath features a Kohler tub set atop Calacatta marble flooring from Arizona Tile. Chandelier is from Arteriors Home.

CONTINUED FROM PAGE 192

I find that stark contemporary design is not always as warm and inviting of a setting as I want to live in," the wife says. Open to suggestions, the owners allowed the designers to perfect a juxtaposition of rustic wooden pieces, plush suede, velvet and leather seating, and patterned carpets and drapes. Pops of color were infused through accent pillows and the owners' collection of contemporary artwork. "We wanted to lighten the mood a bit and keep it fun," Mehrer says.



**STYLE SELECTION**  
This versatile lamp, which is both modern in form and elegant in design, has an elongated glass base with a drum shade. *La Ange 720*, price upon request; lampworks.com

CONTINUED FROM PAGE 194

True to the design team's intention, the owners admit that time spent inside and out of their home is as enjoyable as an actual vacation—and guests seem to agree. "People just come in and automatically feel at home," says the wife. And according to Vallone, it's the unexpected little touches that encourage its welcoming atmosphere. "The shuffleboard was a great idea," she says. "The husband tells me there isn't one person who comes to visit that doesn't play!"

194 LUXE INTERIORS + DESIGN

**STYLE SELECTION**

This versatile lamp, which is both modern in form and elegant by design, has an elongated glass base with a drum shade. *La Ange 720*, price upon request; lampworks.com

CONTINUED FROM PAGE 194

True to the design team's intention, the owners admit that time spent inside and out of their home is as enjoyable as an actual vacation—and guests seem to agree. "People just come in and automatically feel at home," says the wife. And according to Vallone, it's the unexpected little touches that encourage its welcoming atmosphere. "The shuffleboard was a great idea," she says. "The husband tells me there isn't one person who comes to visit that doesn't play!"